



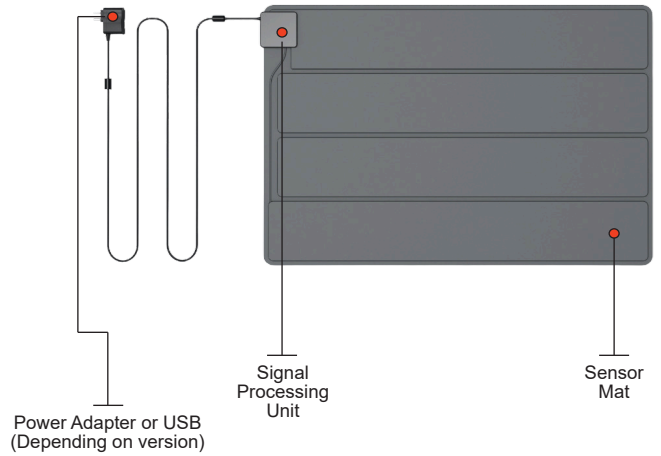
Vital Alert Sensor Mat User Manual (VSA-M991199V1BWI)

Please read this manual carefully before using the device.

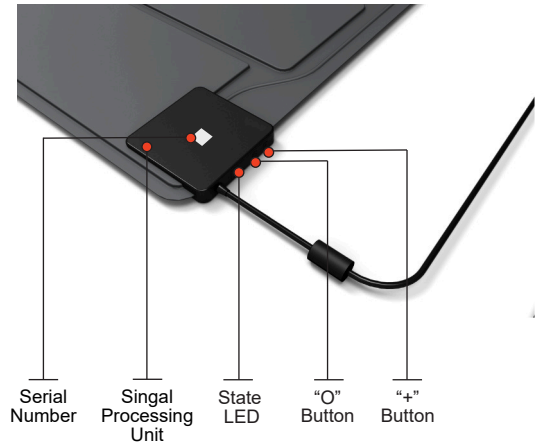
V3.250113

Device & Controls

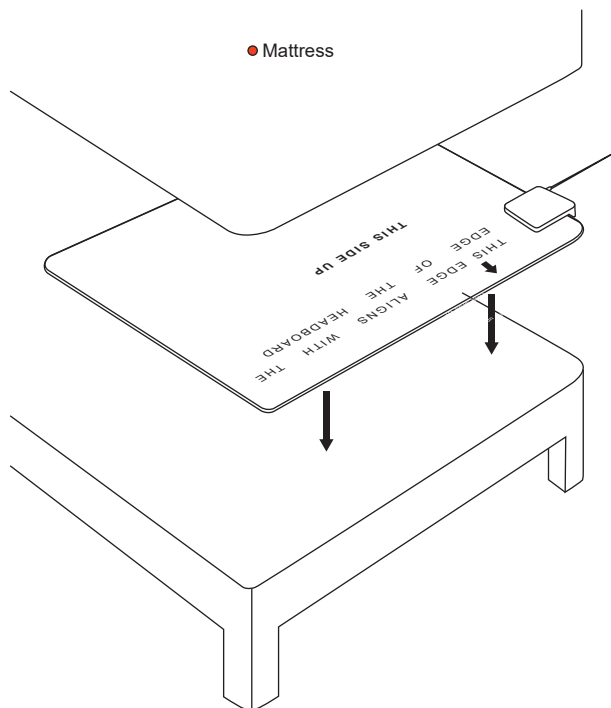
Top View



Detail View



Positioning the Device



- The device should be placed under mattress
- The side marked "THIS SIDE UP" is placed upward
- The side marked "THIS EDGE ALIGNS WITH THE EDGE OF THE HEADBOARD" is aligned with the edge of the headboard

Technical Specifications

Name	Vital Alert Sensor Mat
Model	VSA-M991199V1BWI
Size	Approx. 836mm * 574mm * 9mm
Weight	Approx. 860g
Product color	Grey
Communication	2.4G WiFi (802.11 a/b/g/n) 100V-220V
Power supply	50/60Hz
State LED	Off: Power Off Red: Error Blue: The network is not connected Blue Flashing: Can connect to network Green: The device is connected to the network, no one on the mat Green Flashing: The device is connected to the network, data is being transmitted.
Button	"+" button: press and hold until the light flashes blue to configure the network "o" button: press and hold for 5 seconds to calibrate the device
Operating Conditions	0°C~60°C
Storing Conditions	-15°C~60°C
User Weight Range	10kg~150kg

Safety Notice

1. Do not use sharp tools to scratch the surface of the device
2. Do not rub the device hard.
3. Do not excessively bend the device. The built-in optical fiber sensor may be damaged.
4. Do not use or store the device at a temperature higher than the allowable temperature for a long time to avoid adhesive aging.
5. Do not pull or bend the connection between the cable and the mattress to avoid damaging the cable.
6. The surface of the mat is made of waterproof material, but do not wash the mat with water and keep the device in a dry environment. If necessary, the surface of the mat can be cleaned with a damp cloth.
7. Do not let the device in contact with corrosive and high-temperature substances and keep away from the fire source.
8. Only use the device within the ambient conditions mentioned in the "technical specifications"!
9. Do not dispose the device as household waste. Take the device to a proper recycling place to recycle this electronic device.
10. The device is only suitable for use on flat and stable surface. Do not place the device in the bed with active function (such as hammock), as this could cause abnormal operations of the device.
11. The device must not be used close to any source of vibration (e.g. washing machine) as the vibrations could affect the functions of the device.
12. Do not repair the device by yourself. If necessary, please contact Vital Sign Alert for after-sales service in time.

Consumers violate the above warnings, the losses caused by improper use will bear all consequences on their own, and the company will not have any legal liability.



Non-professionals should not disassemble the device at will, otherwise the built-in optical fiber may be damaged.
The device can not completely replace medical products, people can not rely solely on monitoring neglect to take care of the monitored person.

Declaration

Declaration of the Presence Condition of the Restricted Substances						
Unit	Marking Restricted substances and its chemical symbols					
	Lead (Pb)	Mercury (Hg)	Cadmium (Cd)	Hexavalent chromium (Cr6+)	Polybrominated biphenyls (PBB)	Polybrominated diphenyl ethers (PBDE)
Power Adapter	X	○	○	○	○	○
Sensor Mat	x	○	○	○	○	○
Sensor	X	○	○	○	○	○

Note 1: "○" indicates that the percentage content of the restricted substance does not exceed the percentage of reference value of presence.
Note 2: "X" indicates that the percentage content of the restricted substance exceeds the percentage of reference value of presence.
This product conforms to RoHS environmental protection requirements. At present, there is no mature technology in the world to replace or reduce the lead content in electronic ceramics, optical glass, steel and copper alloy.

Warranty

- The valid warranty period of this device is one year from the date of sale.
- To register for product warranty, visit <https://www.vitalsignalert.com/warranty> or scan the QR code below to visit the URL
- During the warranty period, you can get warranty service with the purchase record at the retailer or service outlet.
- If you are inconvenient in contacting the service outlet, please call customer service phone + 65 67630309

The warranty of this device does not apply to:

1. Products not produced by the company;
2. Products not sold by our company;
3. Product failure or damage caused by natural disasters and other force majeure (such as earthquake, fire, etc.);
4. Product failure or damage caused by human reasons (unauthorized disassembly, change of any component, installation, use, storage, input of inappropriate voltage and current in accordance with the requirements of the product operation manual, etc.);
5. The user alters and tears up the product barcode by themselves;
6. Device and components have exceeded the warranty period;



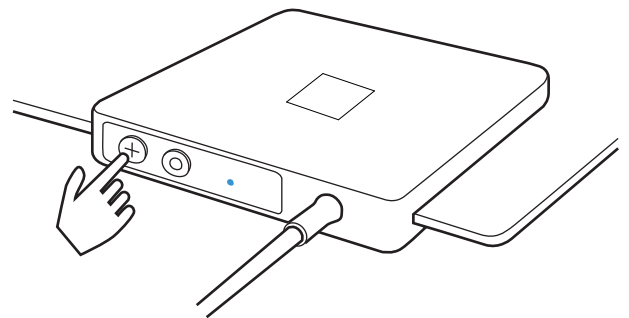
*The right to interpret this warranty belongs to Vital Sign Alert Pte Ltd

Vital Sign Alert Pte Ltd

Address: 14 Fifth Lok Yang Rd, Singapore 629763
Tel: + 65 67630309
Fax: +65 67639776
Email: hello@vitalsignalert.com
Website: www.vitalsignalert.com

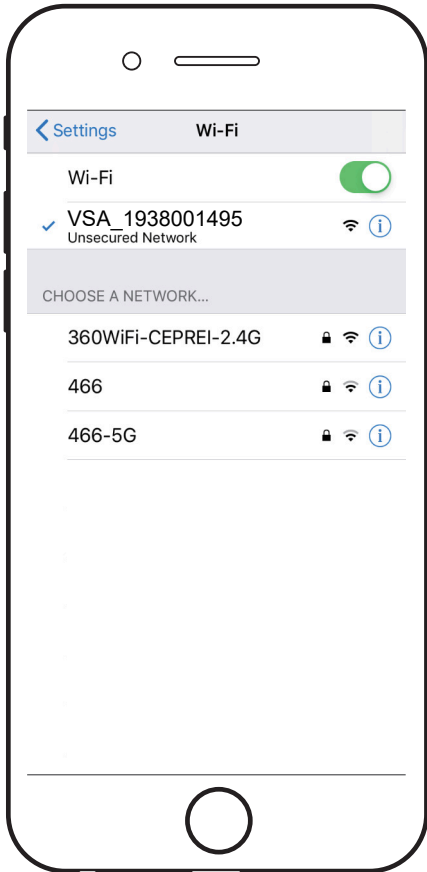
Connecting the Network

1. Press and hold the "+" button on the signal transmission unit until the blue flashes. The signal transmission unit will establish a wireless network with Vital Alert Sensor Mat device number (for example: VSA_1938001495)



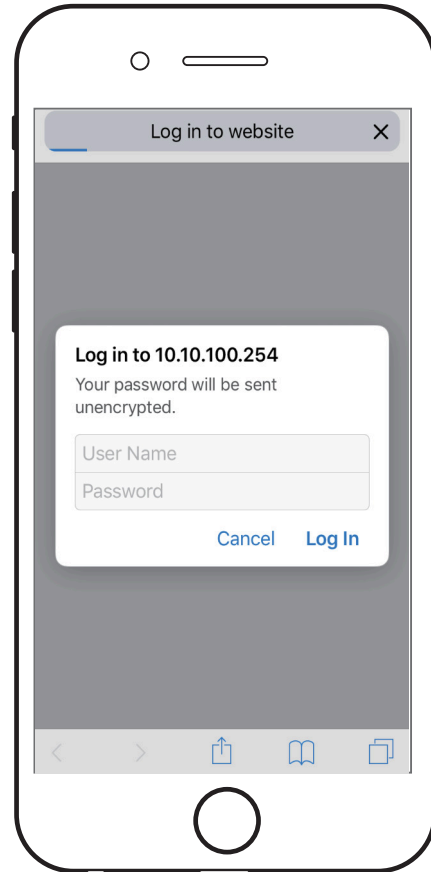
Connecting the Network

2. Turn on the Wifi on the mobile phone. Connect the mobile phone to the wireless network established in the previous step.



Connecting the Network

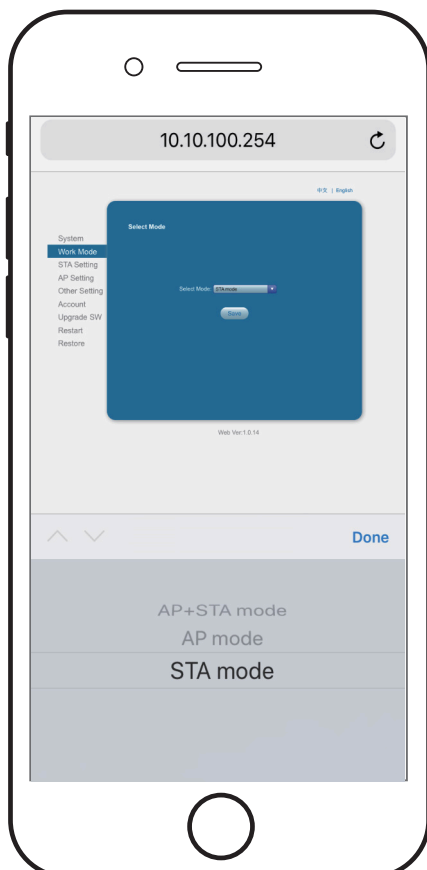
3. Open a browser on the mobile phone, under the URL, input the IP address, 10.10.100.254 and log in with:
User Name: **admin**, Password: **admin**



Connecting the Network

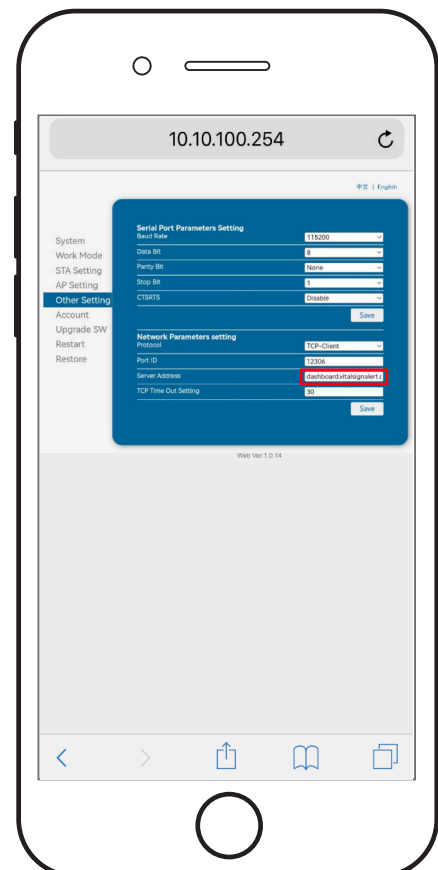
4. Click < Work Mode > column, click the drop-down button to select < STA mode >, then click < Save > button.

Tips: If your interface is not in English, please click <English> button in the upper right corner to switch to English interface. **Do not click < Restart > button at this time. Only at the end of the configuration.**



Connecting the Network

5. Click <Other Setting > column, if the Server Address is not < dashboard.vitalsignalert.com >, change if applicable.



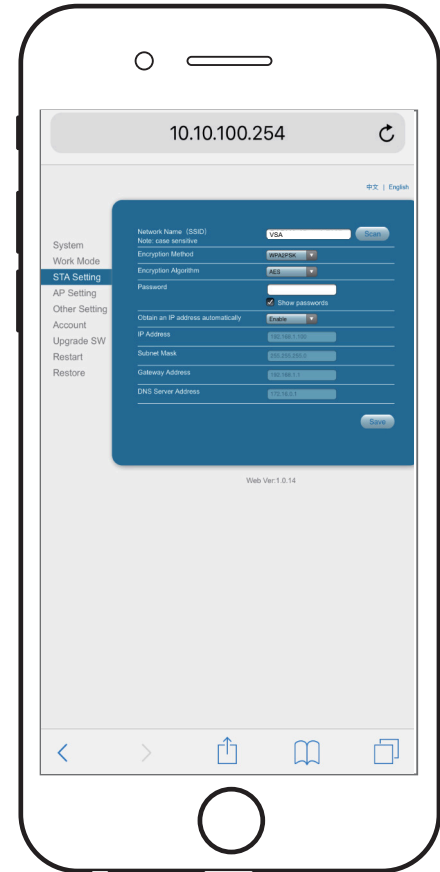
Connecting the Network

6. Click <STA Setting > column and click <Scan> button. Select the wireless network you are currently using, and then click < OK > button.



Connecting the Network

7. Input the password of the wireless network selected in the previous step, and then click < save > button. There may be a pop mentioning that the password is empty, click <ok> to close.



Connecting the Network

8. Click < Save > . From here, if you see the < Restart > button, you can click to reset to implement the configured settings.

